

CERTIFIED LAND CORNER RECORDATION

DESCRIPTION OF CORNER EVIDENCE FOUND, AND ORIGINAL RECORD (If known)

LOCATION

1/4 S.20  
1/4 S.29

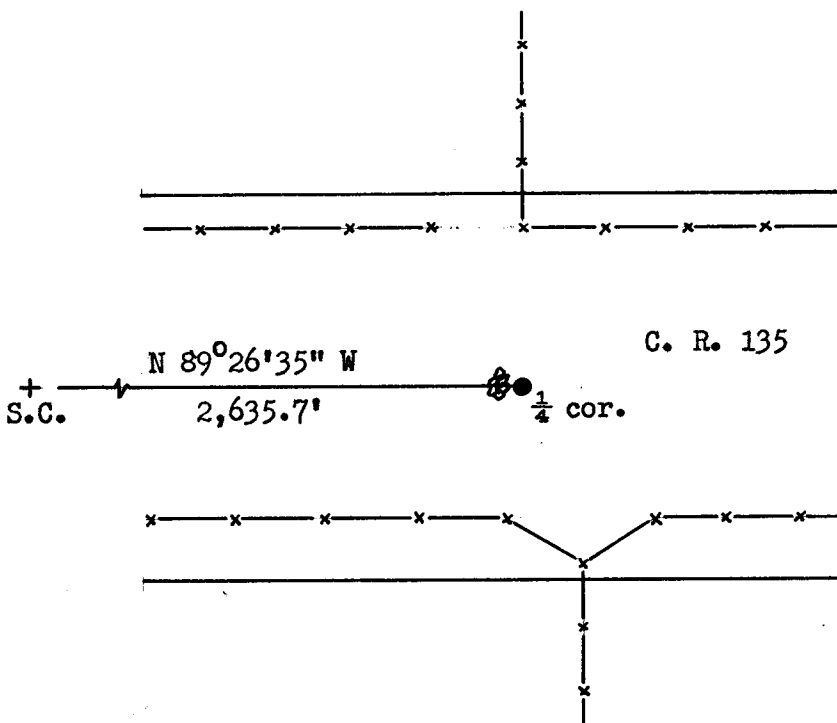
T.16N., R.64W.  
6th P.M.

Found a 6" x 6" x 12" granite boulder, in three pieces, with "1/4" chiseled on face. Corner position taken where bottom two pieces were found in place.  
G.L.O. record: Quartz boulder, 16 x 6 x 6, Alfred M. Rogers, 1871.

DESCRIPTION OF MONUMENT AND ACCESSORIES ESTABLISHED TO PERPETUATE THE ORIGINAL LOCATION OF THIS CORNER:

At the corner: Set a 1 1/2" dia. x 30" long iron pipe with brass cap.  
Accessories: Raised a rock mound, 3' west of corner monument.

SKETCH, WITH COURSE AND DISTANCE TO ADJACENT CORNER IF DETERMINED IN THIS SURVEY. (May Sketch or Paste Reproduction on Reverse Side.)



Brass cap set 6" above surface.  
Brass cap stamped:  
T.16N. R.64W.  
1/4 S.20  
1/4 S.29  
LS 519 1972

I, R.L. Hudson certify that I have carefully performed ~~or reviewed~~ the work done on the diagrammed corner as reported on this recordation form and approve the same.

R.L. Hudson  
Signature of Surveyor

Wyoming L.S. No. 519  
Registration No.

STATE OF WYOMING,  
Office of Clerk and Recorder,  
County of Laramie

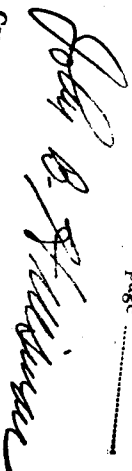
This "corner record" was filed for record on the 9th day of August, 1972, was noted on the cross-index plat and is assigned page No. 16-64, in book No. JONES

Johy B. Hudson  
County Official

Cross Index No. _____	T. _____	R. _____	Mer. _____
_____	T. _____	R. _____	Mer. _____
_____	T. _____	R. _____	Mer. _____
_____	T. _____	R. _____	Mer. _____
_____	T. _____	R. _____	Mer. _____
_____	T. _____	R. _____	Mer. _____
_____	T. _____	R. _____	Mer. _____

The State of Virginia  
County of Parson } SS

This instrument was filed for record  
at 9:15 o'clock P. M. on the  
9th day of August  
A. D. 19 78 and duly recorded in  
Book \_\_\_\_\_ on page \_\_\_\_\_



County Clerk & Ex-Officio Register of Deeds  
Deputy